

LIFE/work balance

**CLASSROOM** *Secrets*

**#LIFE**workbalance

We have started a #LIFEworkbalance campaign and we need your help to complete our LIFE/work balance survey.

We hope to publish the results soon, so please give 15 minutes of your time to help us get a true picture of school life.

Want to be a part of this campaign? Take the [survey](#) on our website and share it with your colleagues!

## Year 1 – Summer Block 1 – Questions – Question Openers

### About This Resource:

This PowerPoint has been designed to support your teaching of this small step. It includes a starter activity and an example of each question from the Varied Fluency and Application and Reasoning resources also provided in this pack. You can choose to work through all examples provided or a selection of them depending on the needs of your class.

### National Curriculum Objectives:

English Year 1: (1G5.3) [Introduction to question marks to demarcate sentences](#)

English Year 1: (1G5.3) [Beginning to punctuate sentences using a question mark](#)

[More resources](#) from our Grammar, Punctuation and Spelling scheme of work.

Did you like this resource? Don't forget to [review](#) it on our website.

## Year 1 – Summer Block 1 – Questions – Question Openers

### Notes and Guidance:

- Now that children are familiar with what a question is and can identify that a question mark is used to demarcate these, they will move on to explore other ways of forming questions.
- Many questions start with question words such as when, where, what, who, why and how.
- As part of this step children will read and complete simple questions using these question words, such as What is your name? and How old are you?

### Focused Questions:

- Insert the correct question words for these questions.
- Choose the question that would give the following answer.

# Step 2: Question Openers

## Introduction

Is the sentence below a statement or a question?

**I cannot find my socks.**



## Introduction

Is the sentence below a statement or a question?

**I cannot find my socks.**



**A statement.**

## Varied Fluency 1

Circle the question words below.

**Wish**

**Was**

**When**

**How**

**Why**

**She**

## Varied Fluency 1

Circle the question words below.

**Wish**

**Was**

**When**

**How**

**Why**

**She**

## Varied Fluency 2

Complete the sentence with the correct question word.

\_\_\_\_\_ is your name?

**What**

**How**

**Where**

## Varied Fluency 2

Complete the sentence with the correct question word.

**What** \_\_\_\_\_ is your name?

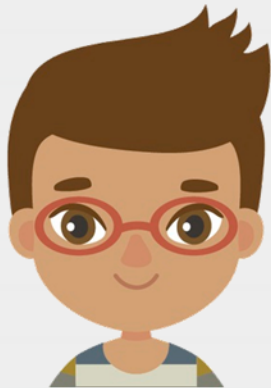
**What**

**How**

**Where**

### Varied Fluency 3

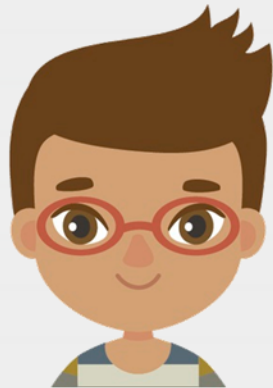
**True or false? Mark has used the correct question word.**



**Where is your school  
called?**

### Varied Fluency 3

**True or false? Mark has used the correct question word.**



**Where is your school  
called?**

**False. It should be 'what'.**

## Varied Fluency 4

Tick the question that would give the following answer:

**I ate fish.**

**A. What did you eat?**

**B. Why did you go?**

## Varied Fluency 4

Tick the question that would give the following answer:

**I ate fish.**

**A. What did you eat?**



**B. Why did you go?**

## Application 1

Rearrange the words below to create a question. Remember to add a question mark.

**Where**

**is**

**box**

**lunch**

**my**

## Application 1

Rearrange the words below to create a question. Remember to add a question mark.

**Where**

**is**

**box**

**lunch**

**my**

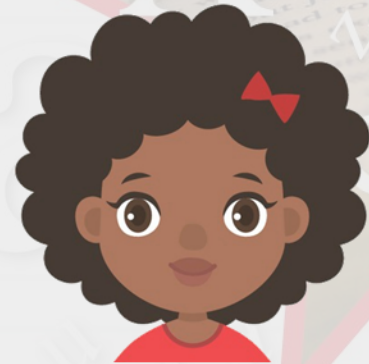
**Where is my lunch box?**

## Application 2

Write an answer to Michael's question below.



Where do you want to meet?

A large, empty speech bubble with a black outline, intended for the student to write their answer to Michael's question.

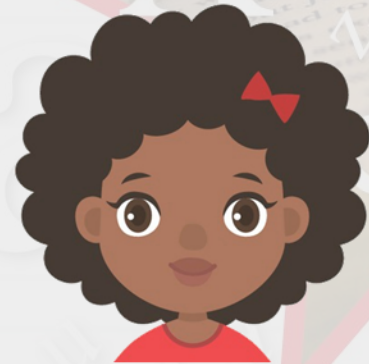
## Application 2

Write an answer to Michael's question below.



Where do you want to meet?

In the playground.



## Reasoning 1

Which word cannot be used at the beginning of this question below?

\_\_\_\_\_ can we do painting?

When

Who

Where

Explain your answer.

## Reasoning 1

Which word cannot be used at the beginning of this question below?

\_\_\_\_\_ can we do painting?

When

Who

Where

Explain your answer.

‘Who’ cannot be used in this question because...

## Reasoning 1

Which word cannot be used at the beginning of this question below?

\_\_\_\_\_ can we do painting?

When

Who

Where

Explain your answer.

**'Who' cannot be used in this question because it doesn't make sense.**